



# ST8675 可控硅触发模块

AC in module

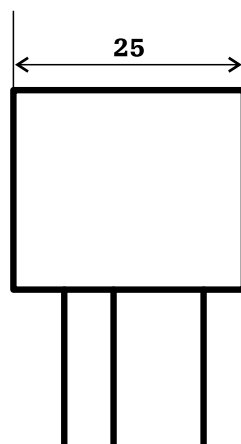
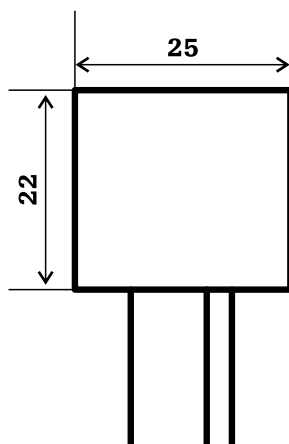
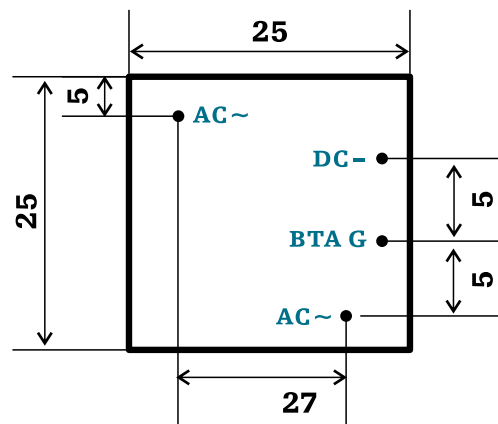
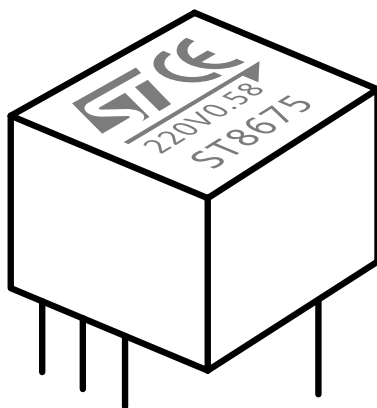
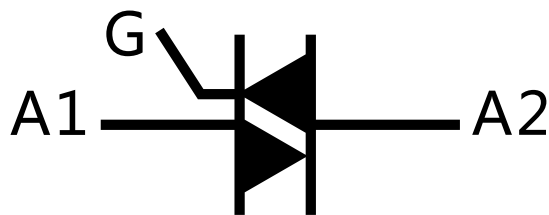
AC 86 ~ 245v 50/60HZ - ST BTA series

Rev.45 - 05 2013 Product data sheet



## DESCRIPTION

Available in high power packages, the BTA/BTB series is suitable for general purpose AC power switching. They can be used as an ON/OFF function in applications such as static relays, heating regulation, water heaters, induction motor starting circuits, welding equipment... or for phase control operation in high power motor speed controllers, soft start circuits.



安装方式 直接焊在PCB上  
针脚直径0.86mm